

# Parkheath

*Sold on Service*

**Glenmore Road NW3**  
**Asking Price £850,000**



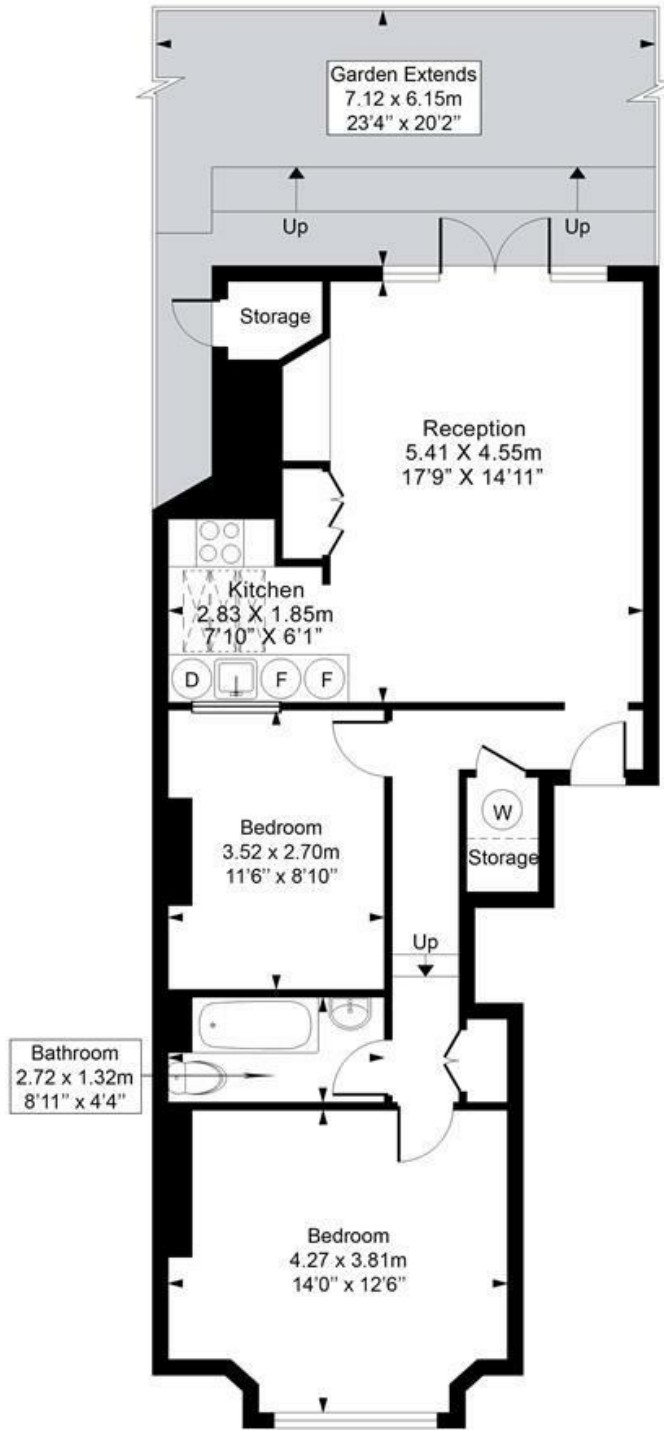
Stylish 2 bedroom garden flat  
Sole use of pretty 23' town garden  
Bright and full of character  
19' reception with wood flooring  
Set in attractive red brick period conversion

14ft main bedroom with sash windows  
12ft second bedroom  
Semi-open plan 7' kitchen with glazed roof  
Share of freehold  
Moments from all Belsize Park amenities

Belsize Park Office 020 7431 3104

# Glenmore Road

Approximate Gross Internal Area = 69.3 sq m / 746 sq ft



## Ground Floor

This plan is for layout guidance only. Drawn in accordance with RICS guidelines. Not drawn to scale unless stated. Windows & door openings are approximate. Whilst every care is taken in the preparation of this plan, please check all dimensions, shapes & compass bearings before marking any decisions reliant upon them.

ELLIE CLAIRE PHOTOGRAPHY LTD  
[www.ellieclairephotography.com](http://www.ellieclairephotography.com)

The particulars do not constitute part of an offer or contract. The particulars, including text, photographs and plans, are for the guidance only of prospective purchasers/tenants and must not be relied upon as statements of fact. The descriptions provided therein represent the opinion of the author and whilst given in good faith should not be construed as statements of fact. Nothing in these particulars shall be deemed a statement that the property is in good condition or otherwise or that any services or facilities are in good working order. All measurements are approximate